

Bassoon

Incidental Music for the Comedy of errors by William Shakespeare

HANS LEWITUS



11



16 ♩=170

♩=170

9



♩=135

29



39



46



54



63



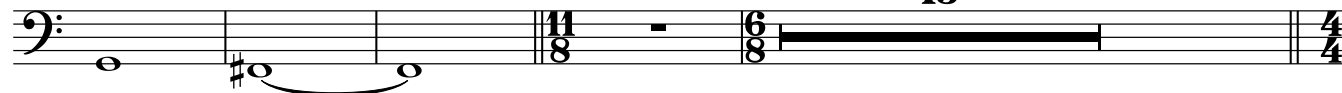
70



77

♩=120

13



Bassoon

94 ♩=130

♩=90

rit..



101 - - - - - ♩=110



105



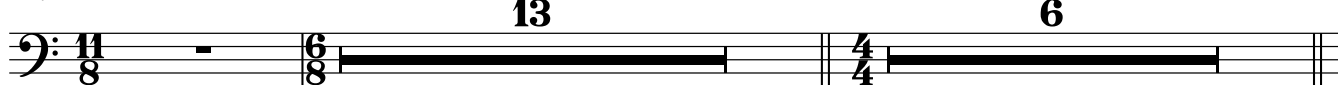
108



111 ♩=130



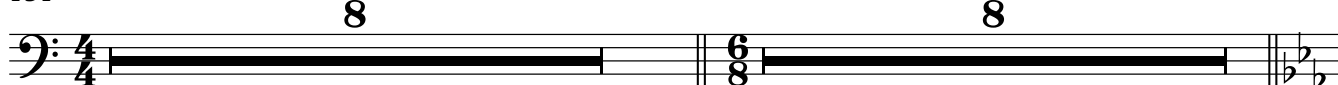
119 ♩=120



139



151 ♩=90



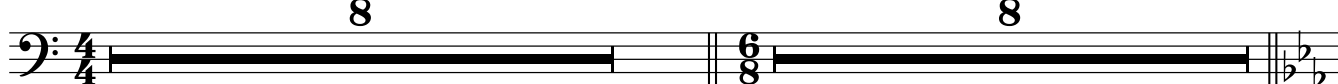
167



182



194 ♩=90



210

7 **2** **17** **3** **9**

rit. - - -

Bassoon

$\text{♩} = 180$

3



7 2 17 3 9

rit. - - -

Bassoon

$\text{♩} = 180$

3

239 - ♩=80

239 - ♩=80

239 - ♩=80

244

Exercise 244 is a single-staff piece in bass clef, 9/8 time. The key signature has four sharps (F#, C#, G#, D#). The melody begins with a quarter rest, followed by a quarter note G2, an eighth note F#2, and a quarter note E2. This is followed by a quarter note D#2, an eighth note C#2, and a quarter note B1. The next measure contains a quarter note A1, an eighth note G#1, and a quarter note F#1. The piece concludes with a quarter note E1, an eighth note D#1, and a quarter note C#1. The time signature changes from 9/8 to 6/8 in the final measure, which contains a quarter note B1, an eighth note A1, and a quarter note G#1.

249

Musical notation for exercise 249, bass clef, key signature of three sharps (F#, C#, G#), 9/8 time signature.

254

13
16

258




13
16

264 $\text{♩} = 180$ **5** $\text{♩} = 180$ **17** **3** rit. . .

289 - ♩=130

2



A musical staff with a bass clef. A single whole note is represented by a thick horizontal line spanning the entire width of the staff. Above the staff, the number '2' is centered. At the end of the staff, there is a double bar line followed by a 2/4 time signature.

210

7 **2** **17** **3** **9**

rit. - - - - -

Bassoon

$\text{♩} = 180$

4/4

239 - ♩=80

239 - ♩=80

239 - ♩=80

244

Exercise 244

249

Musical notation for exercise 249. The key signature has four sharps (F#, C#, G#, D#). The time signature is 9/8. The melody consists of eighth notes and quarter notes, with some measures containing rests.

254

13
16

258


13/16

4/4

264 $\text{♩} = 180$ **5** $\text{♩} = 180$ **17** **3** rit. . .

289 - ♩=130

2



A musical staff with a bass clef. A single whole note is represented by a thick horizontal line spanning the entire width of the staff. Above the staff, the number '2' is centered. At the end of the staff, there is a double bar line followed by a 2/4 time signature.

291 ♩=90

rit.



298 ♩=110



302



305

307 ♩=♩³

♩=140

15

16

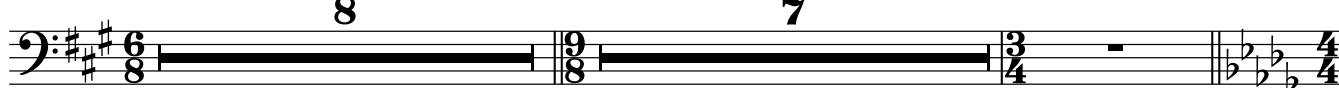


339 ♩=120

♩=150

8

7

355 ♩=110 ♩=♩³

♩=140

15

14

rit.

2



387 ♩=105

rit. .

15

5



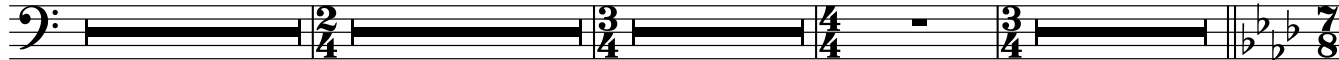
408 ♩=90

3

5

2

2



421 ♩=105

rit. .

15

5



Bassoon

5

442 $\text{♩} = 90$

3 5 2 2

455 $\text{♩} = 115$ $\text{♩} = 90$ rit. - - -

8 4 2

$\text{♩} = \text{♩}^3$ $\text{♩} = \text{♩}$

469 $\text{♩} = 70$

2 2

479 $\text{♩} = 90$ $\text{♩} = 80$ rit. - - -

5 4 5 2

497 $\text{♩} = 130$ $\text{♩} = 120$

4 8 6

$\text{♩} = \text{♩}^3$ $\text{♩} = \text{♩}$

509 $\text{♩} = 65$

6 2

519

2

526 $\text{♩} = 75$ $\text{♩} = 110$

4 8

538



542



546



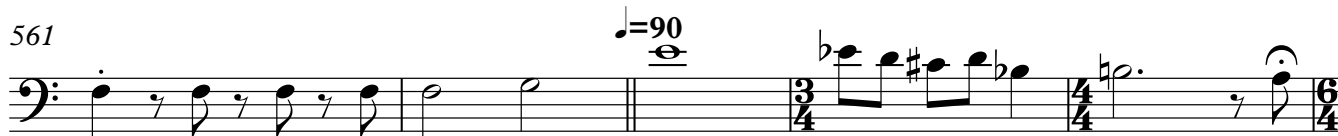
551



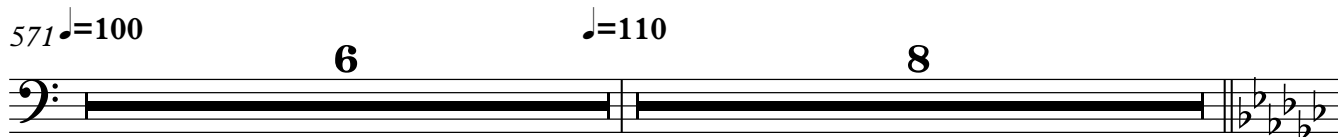
556



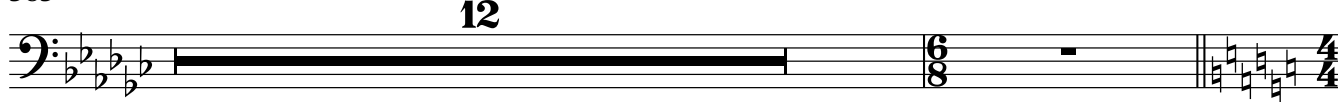
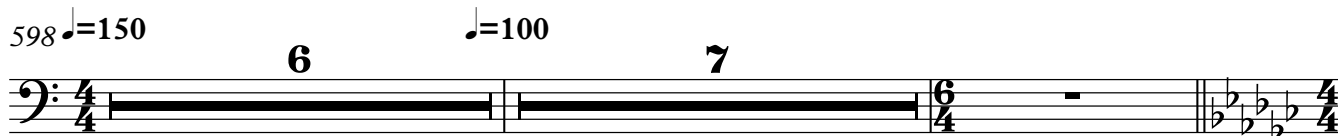
561



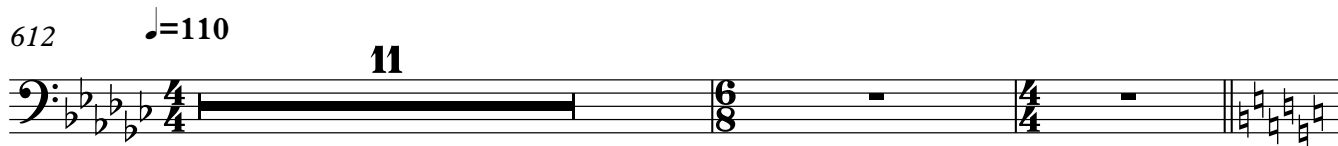
566

571 $\text{♩} = 100$ 

585

598 $\text{♩} = 150$ 

612



625 $\text{♩} = 90$ 

631



634



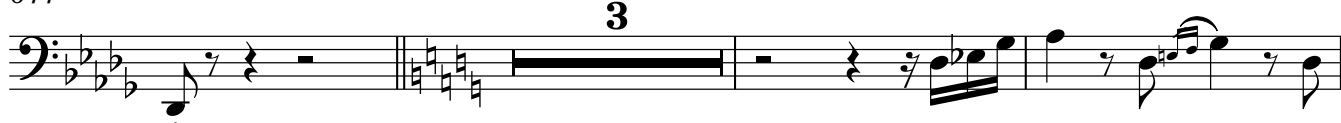
637



640



644



650



653



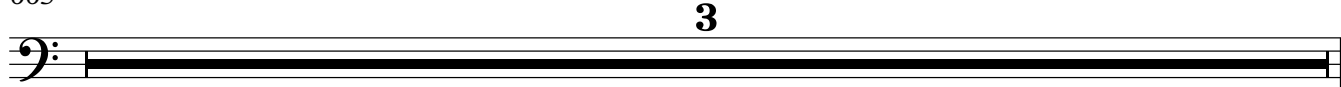
657



661



665



668



672



675



677



681



685 ♩=100



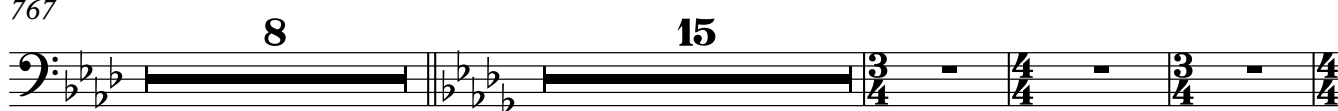
707



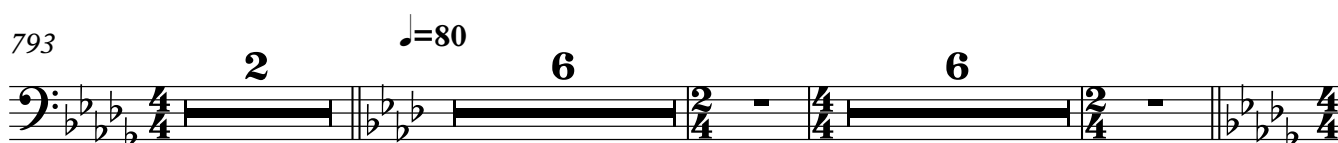
729



767



793



809 ♩=90

